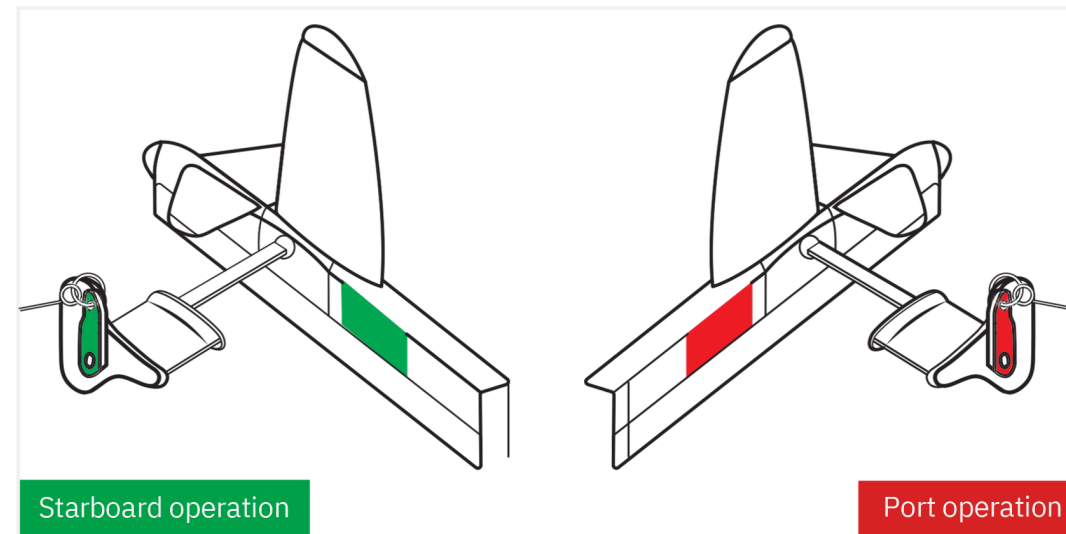
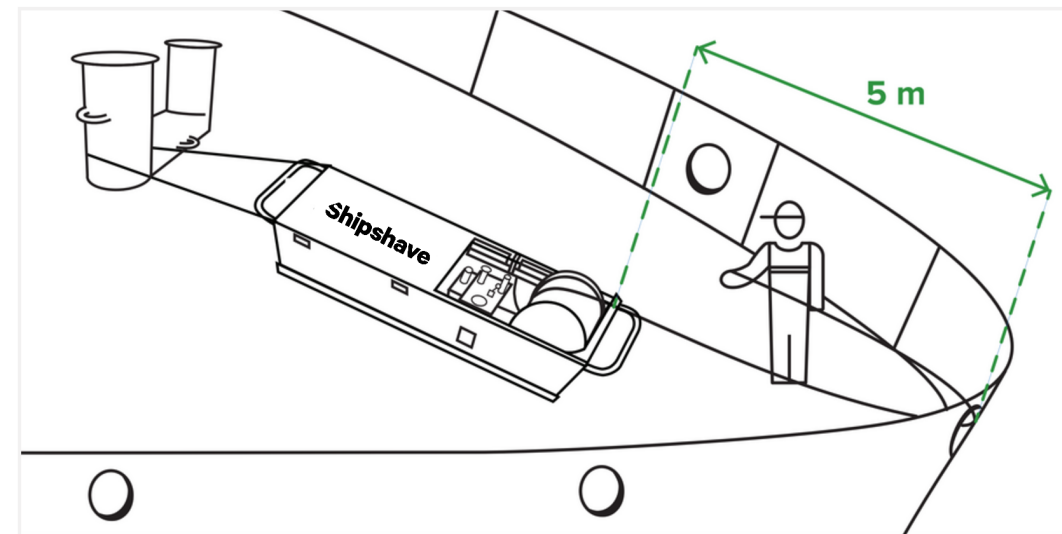


# Shipshave

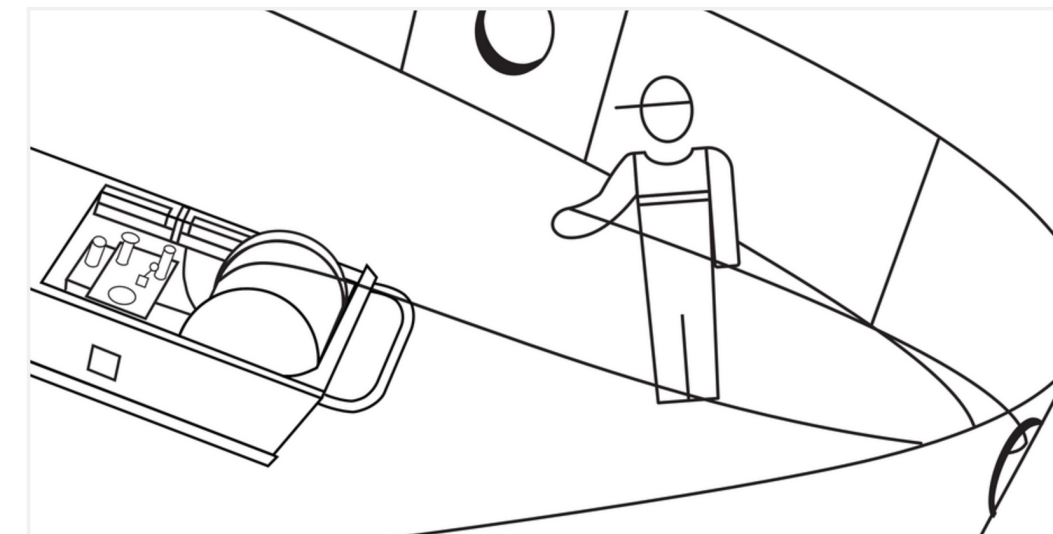
## ITCH V2 In Transit Cleaning of Hulls Directions for use



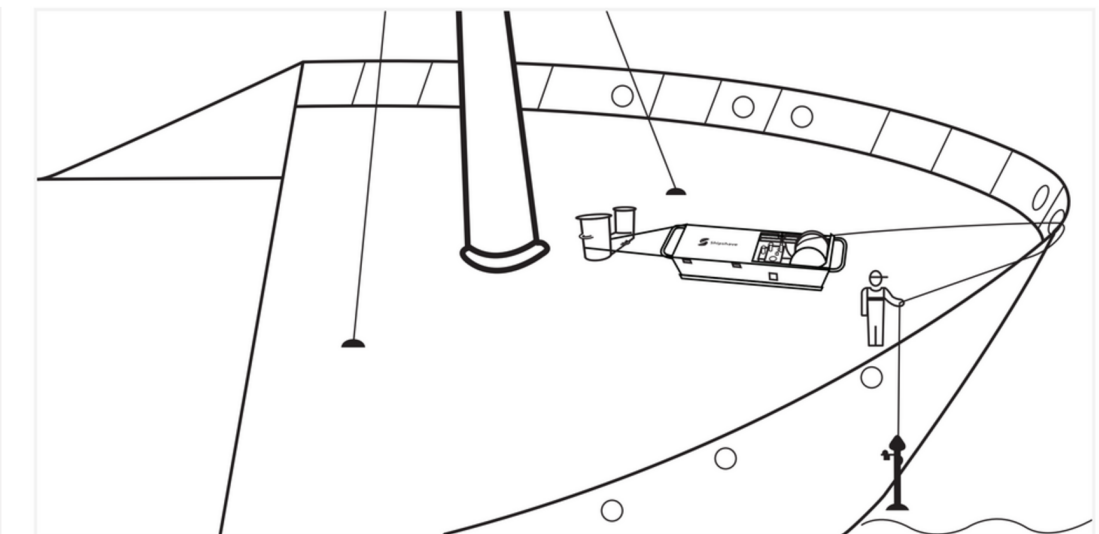
**1.** Charge and assemble the robot.



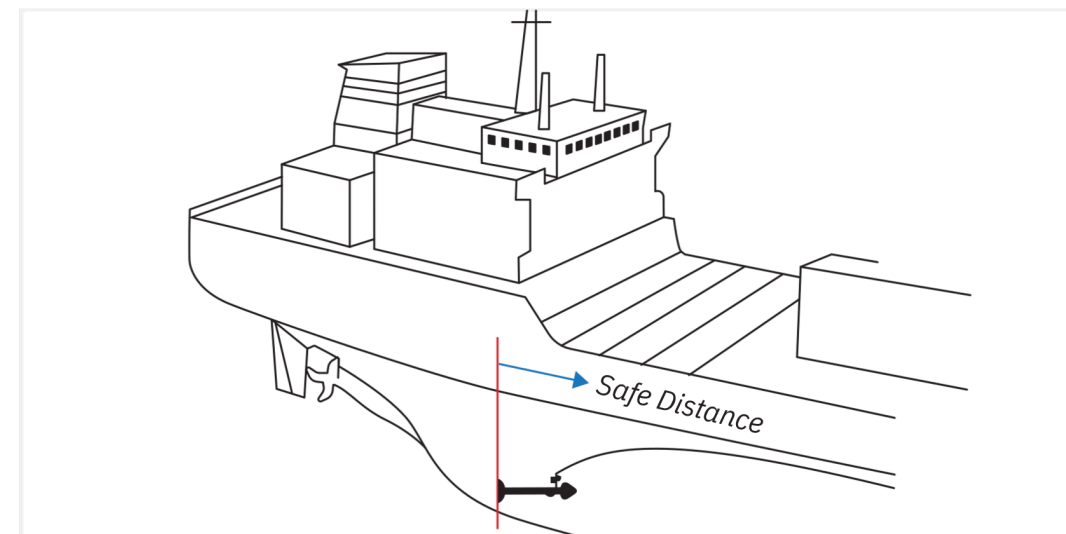
**2.** Secure the winch and connect power.  
Inspect and cut worn rope.



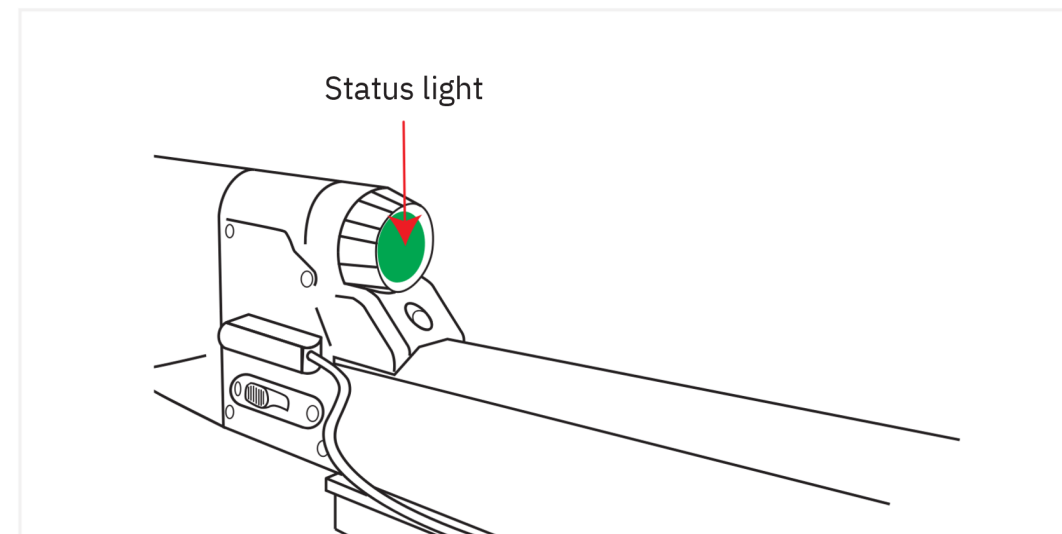
**3.** Lead rope out center fairlead using shive on outside.  
Bring it back onto deck; tie to the robot with bowline knot.



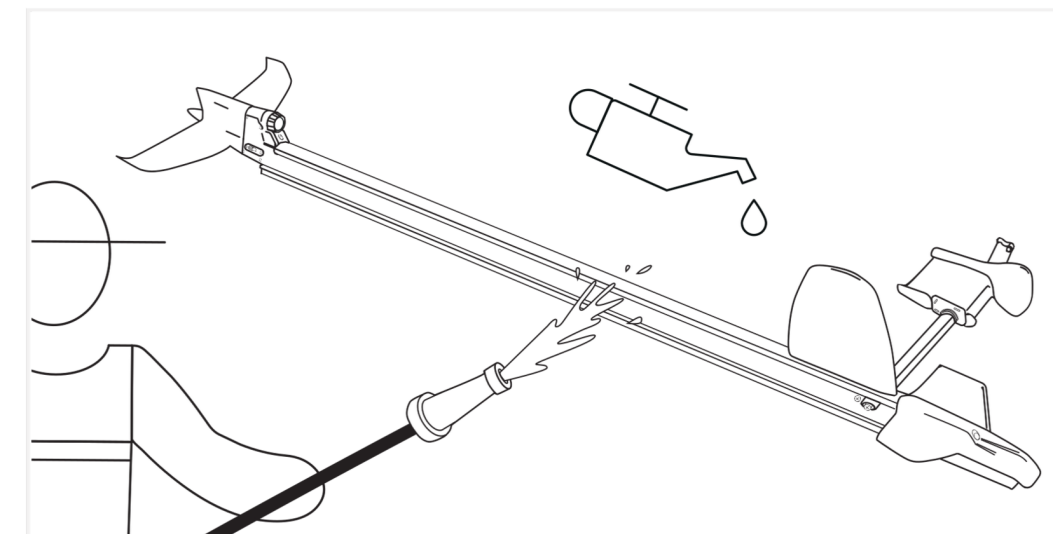
**4.** Power on, confirm solid green light.  
Lower robot on correct side.



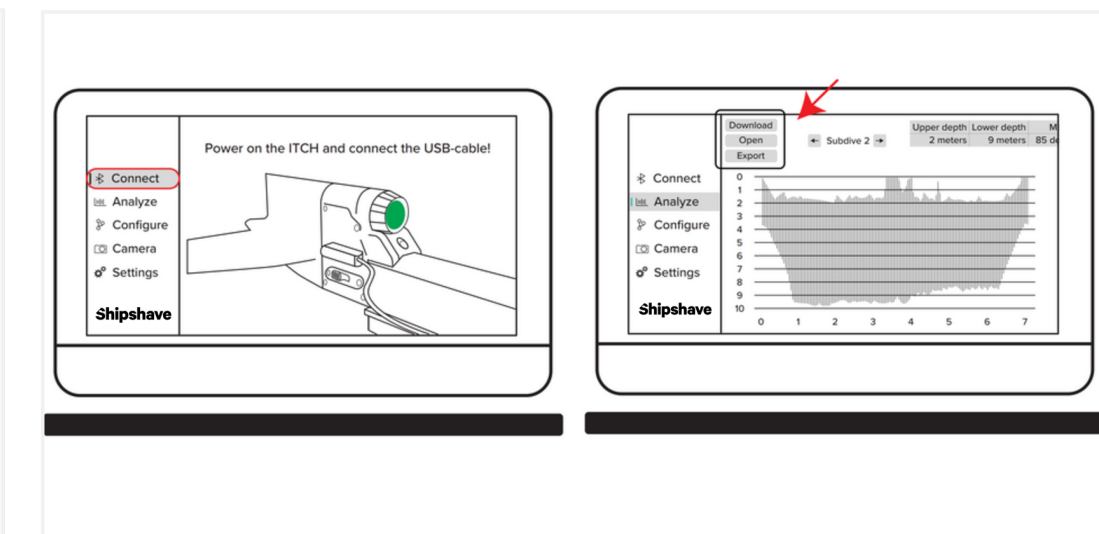
**5.** Clean to "Safe Distance". Change spooling direction.



**6.** Recover the robot and wait for status light  
to turn solid green.



**7.** Rinse robot and winch using fresh water.  
Check for wear. Spray robot with penetrating oil.



**8.** Transfer data and video using Slick. Assess hull  
condition and repeat the operation if necessary.